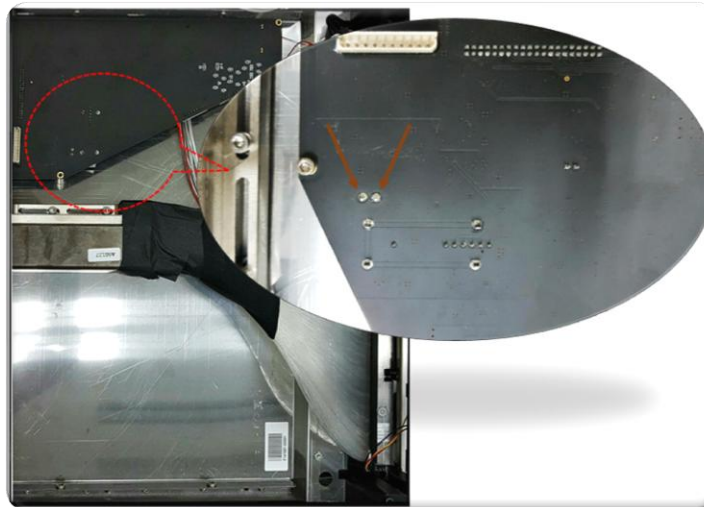


➤ **Check the PMT gain and ADC offset in the scanner**

ADC offset or PMT gain are corrupt, like entering 6-digits or all zero. If they are corrupt, need to enter factory setting or perform the PMT gain and ADC offset verification.

➤ **Measure the High voltagegenerator voltage**

It should be measured during scan only, measured voltage should be above -400 Vdc.



➤ **PMT assembly**

If measured voltage is within range and ADC offset and PMT gain are correct, we should exchange the PMT assembly.

