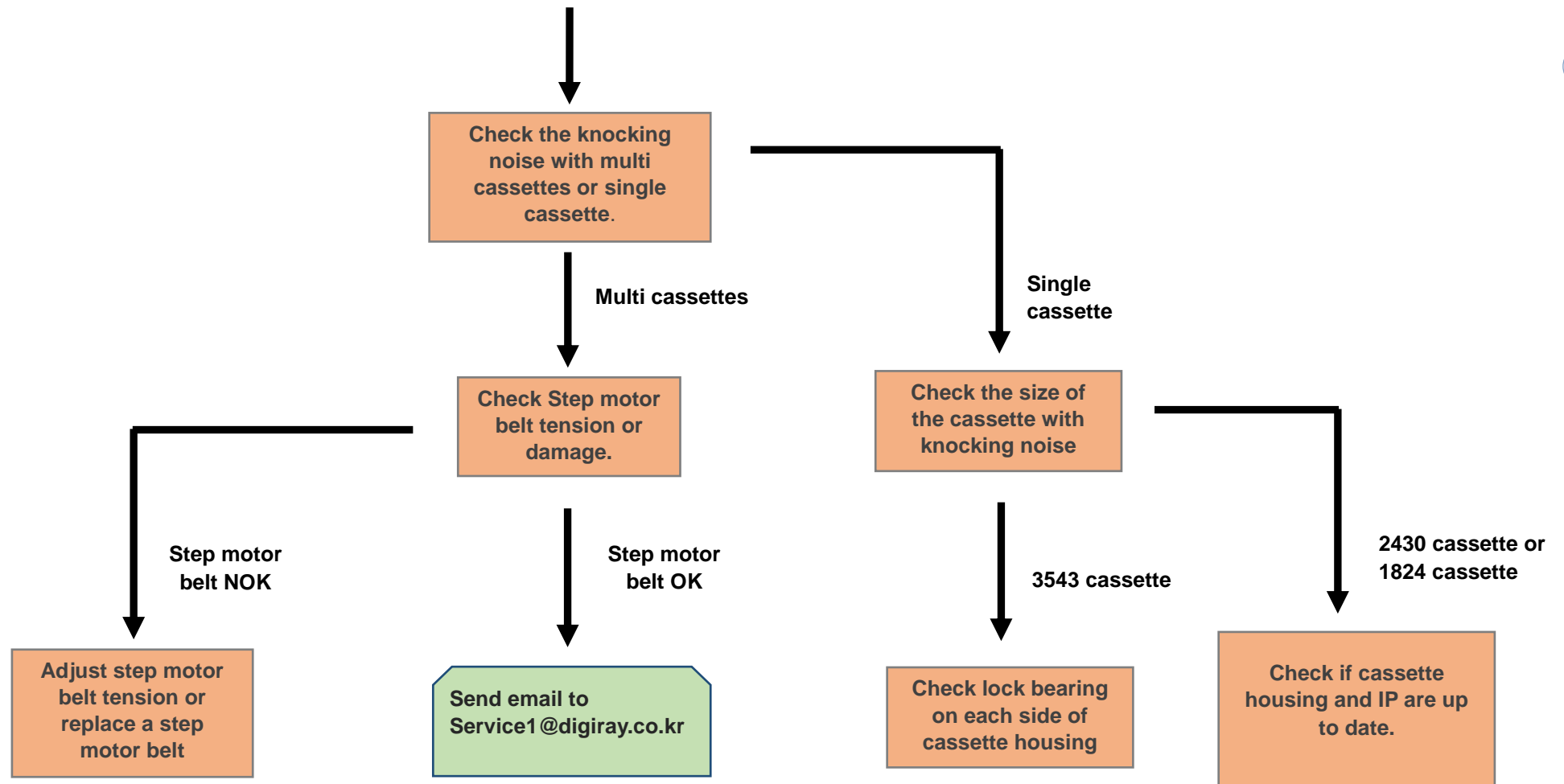
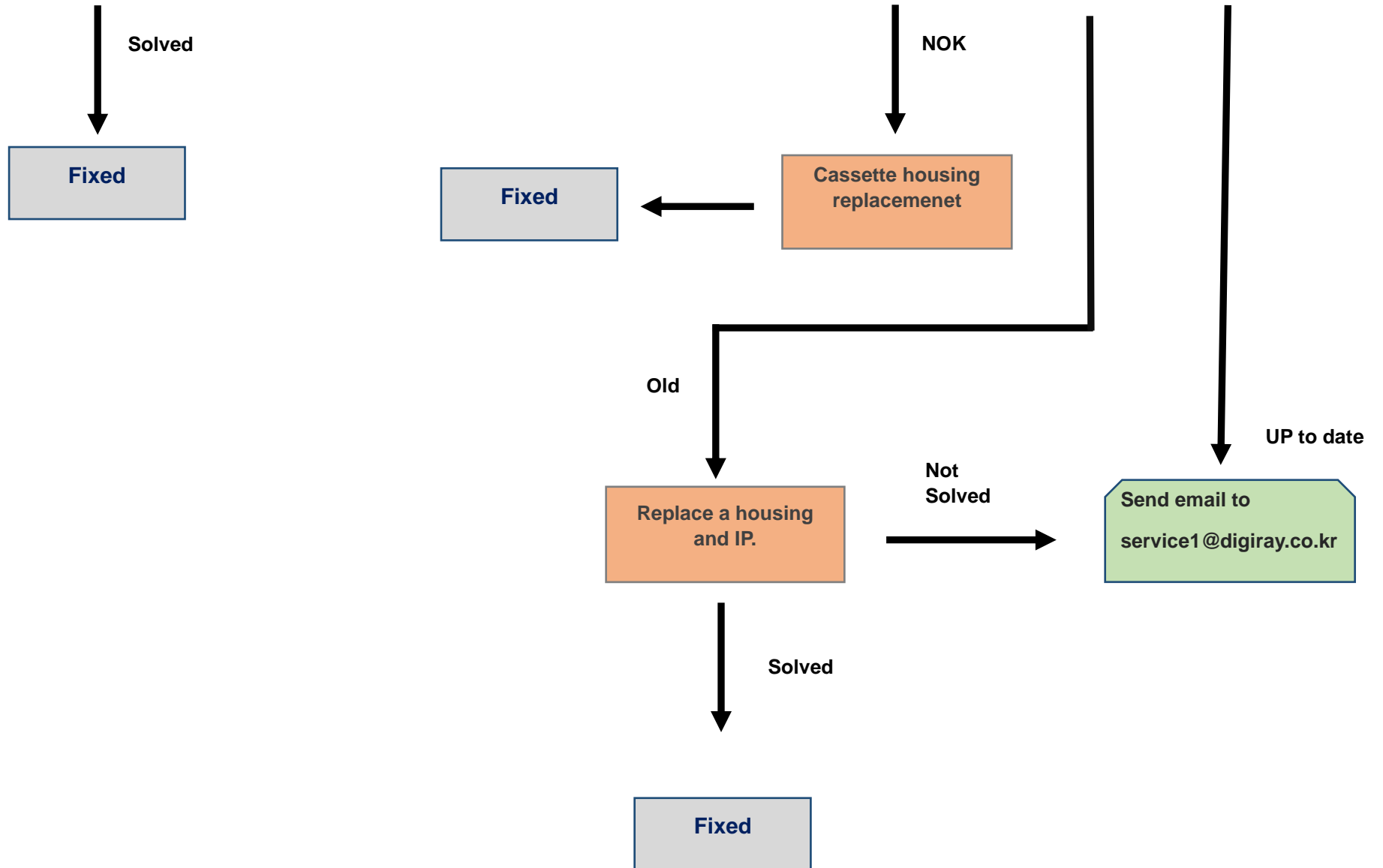


1st case, Knocking noise

Knocking noise happens when it starts to pull out image plate from housing





➤ **Check the housing lock bearing**

Need to check if cassette housing lock bearing works well.

➤ **Check imaging plate improvement**

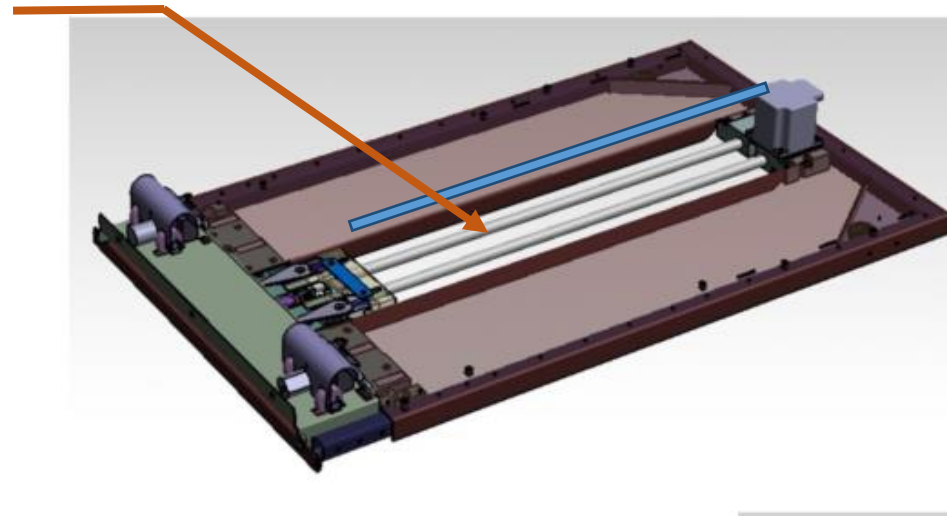
Improved 2430 Moving plate holder and head is longer.

➤ **Worn out step motor drive belt or loose step motor drive belt**

If knocking noise with multi cassettes happens, we need to check the step motor drive belt quality.

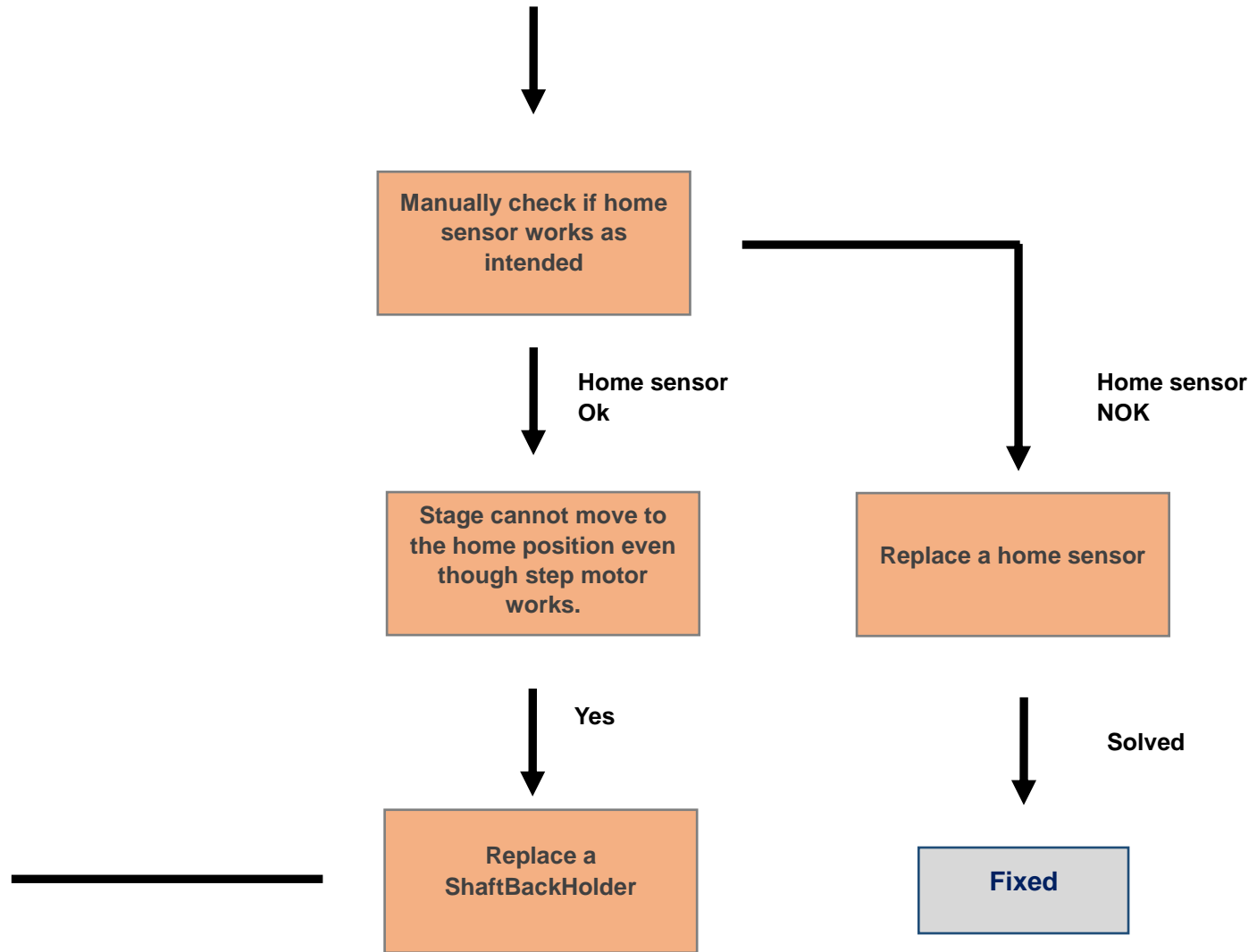
Either Worn-out belt or loose belt can cause knocking noise.

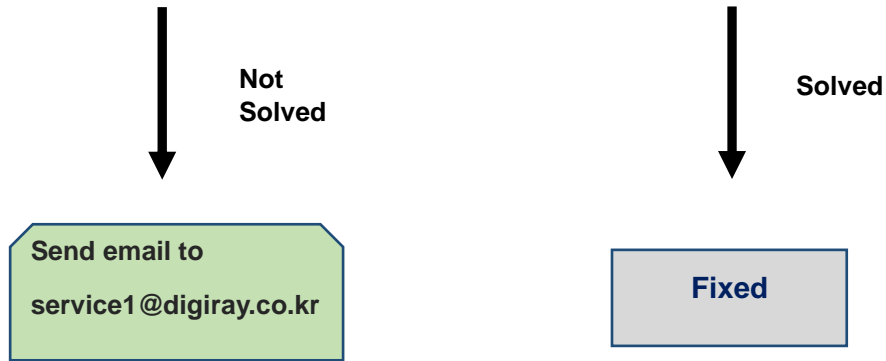
Step motor drive belt



2nd case, Knocking noise

Knocking noise happens when it turns on

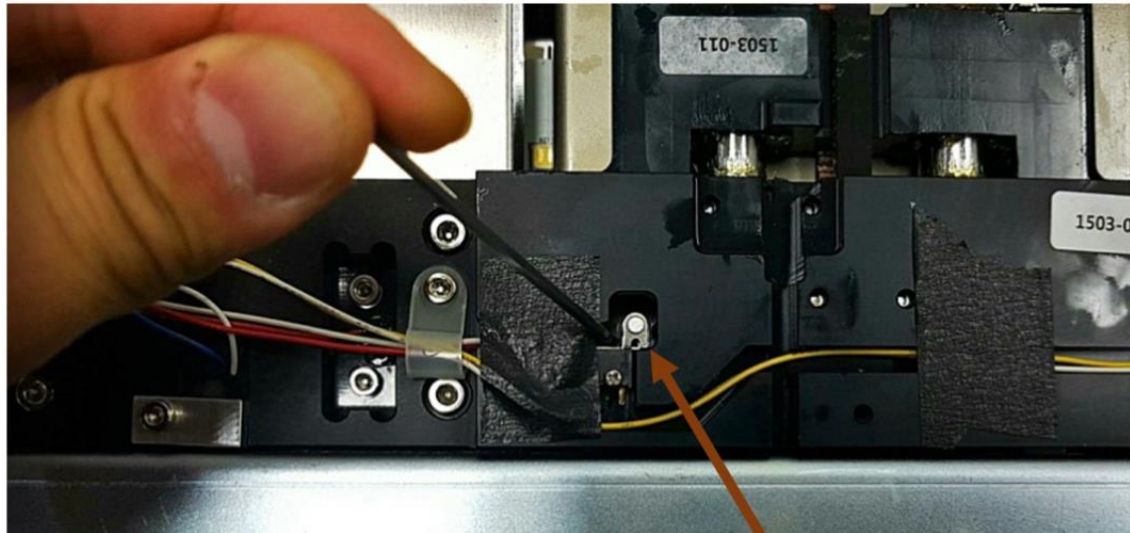




➤ **Check the Home Sensor**

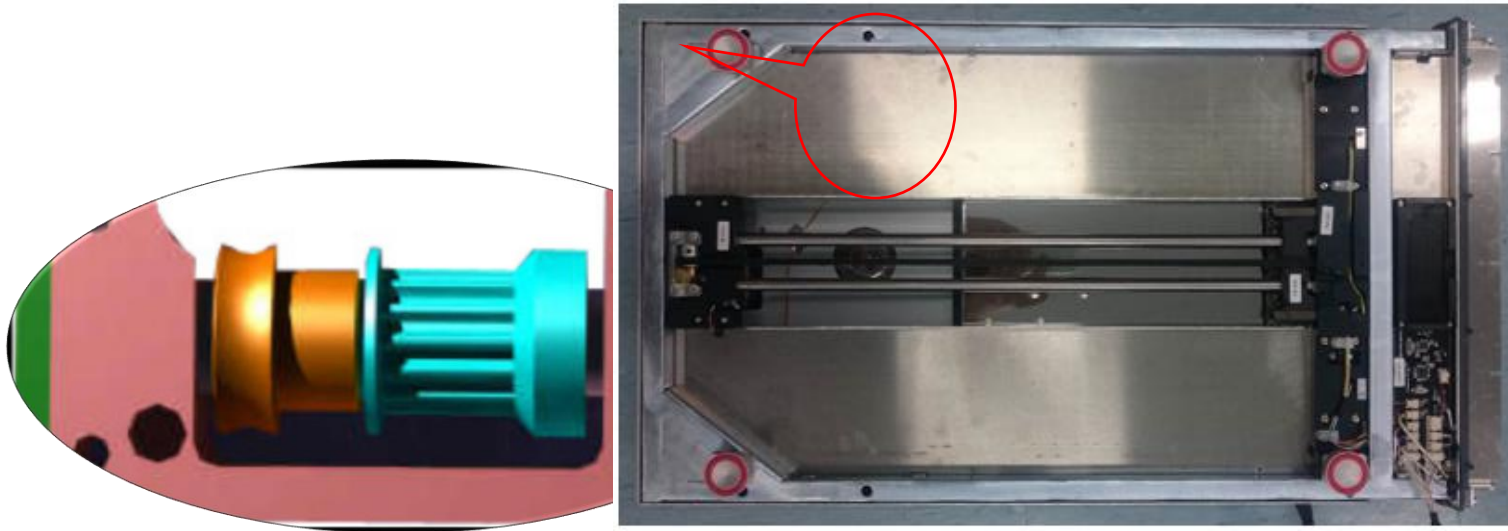
Stage must move to the home position when it turns on. If home sensor is damaged, a step motor keeps working. It causes knocking noise.

If step motor stops when home sensor is manually detected like following picture, it means that home sensor works as intended.



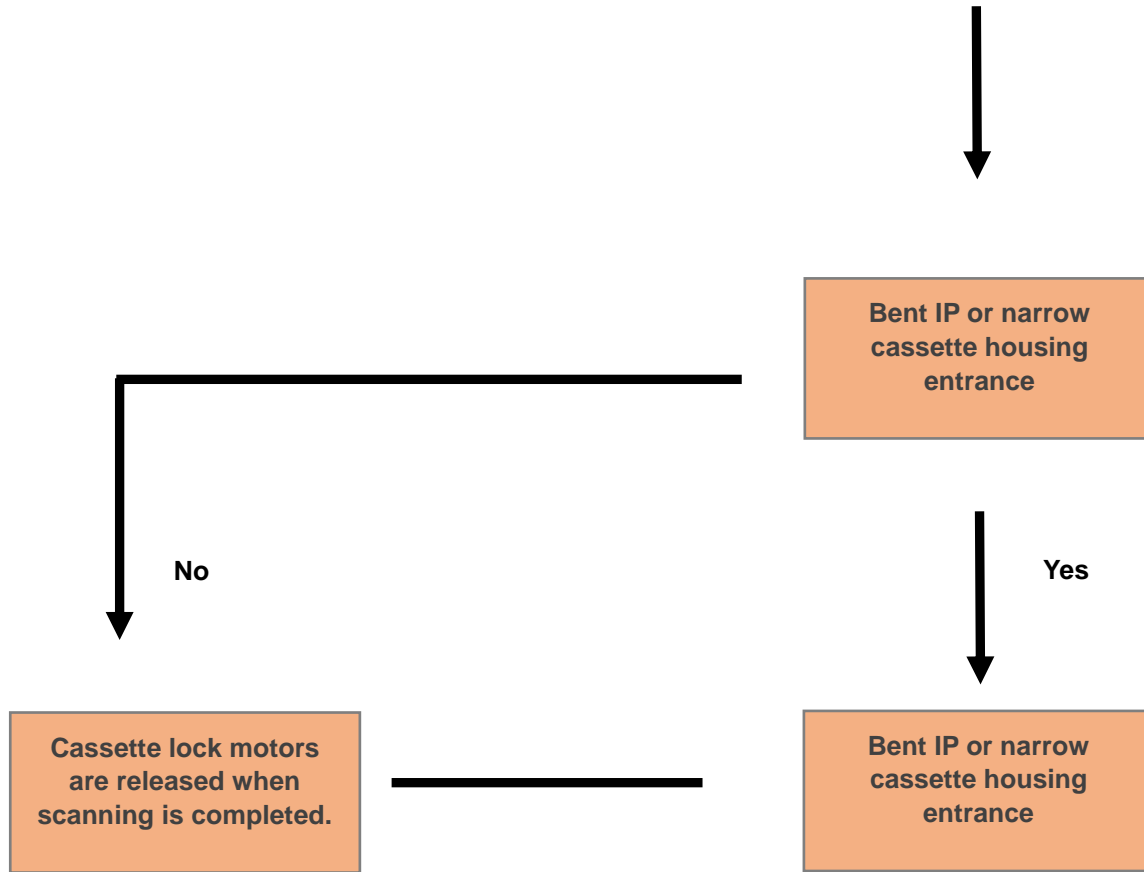
Home sensor is manually detected.

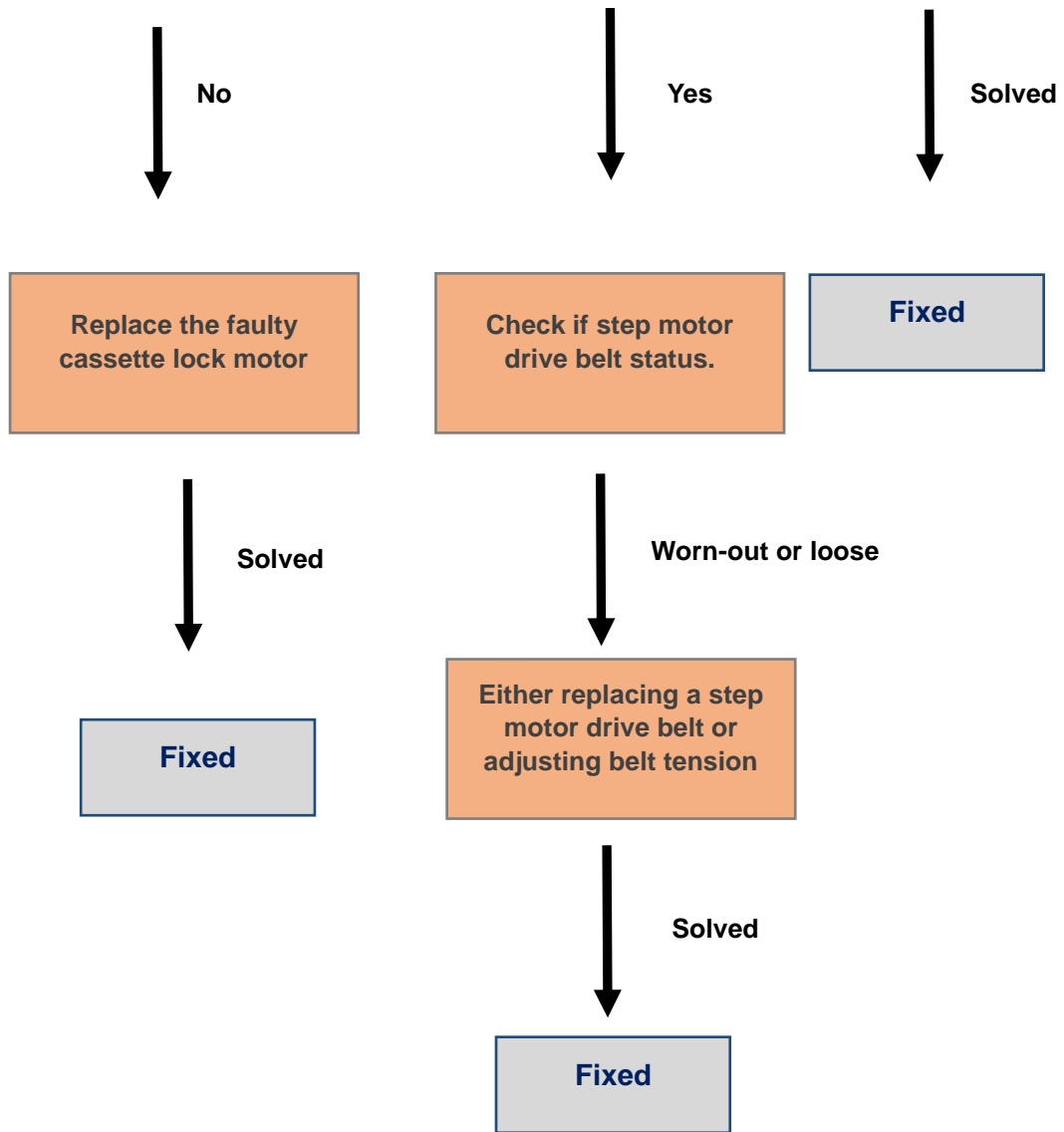
➤ Worn-out ShaftHolerBack



3rd case, Knocking noise

Knocking sound happens when IP is returned to the housing after scanning / erasing process.





➤ **Bent IP and narrow housing entrance**

Bent IP and narrow housing entrance can happen knocking sound when IP gets back to the housing after scanning / erasing process.

➤ **Cassette lock motor**

Set screw is loose, so it can cause cassette lock motor malfunctioning.

