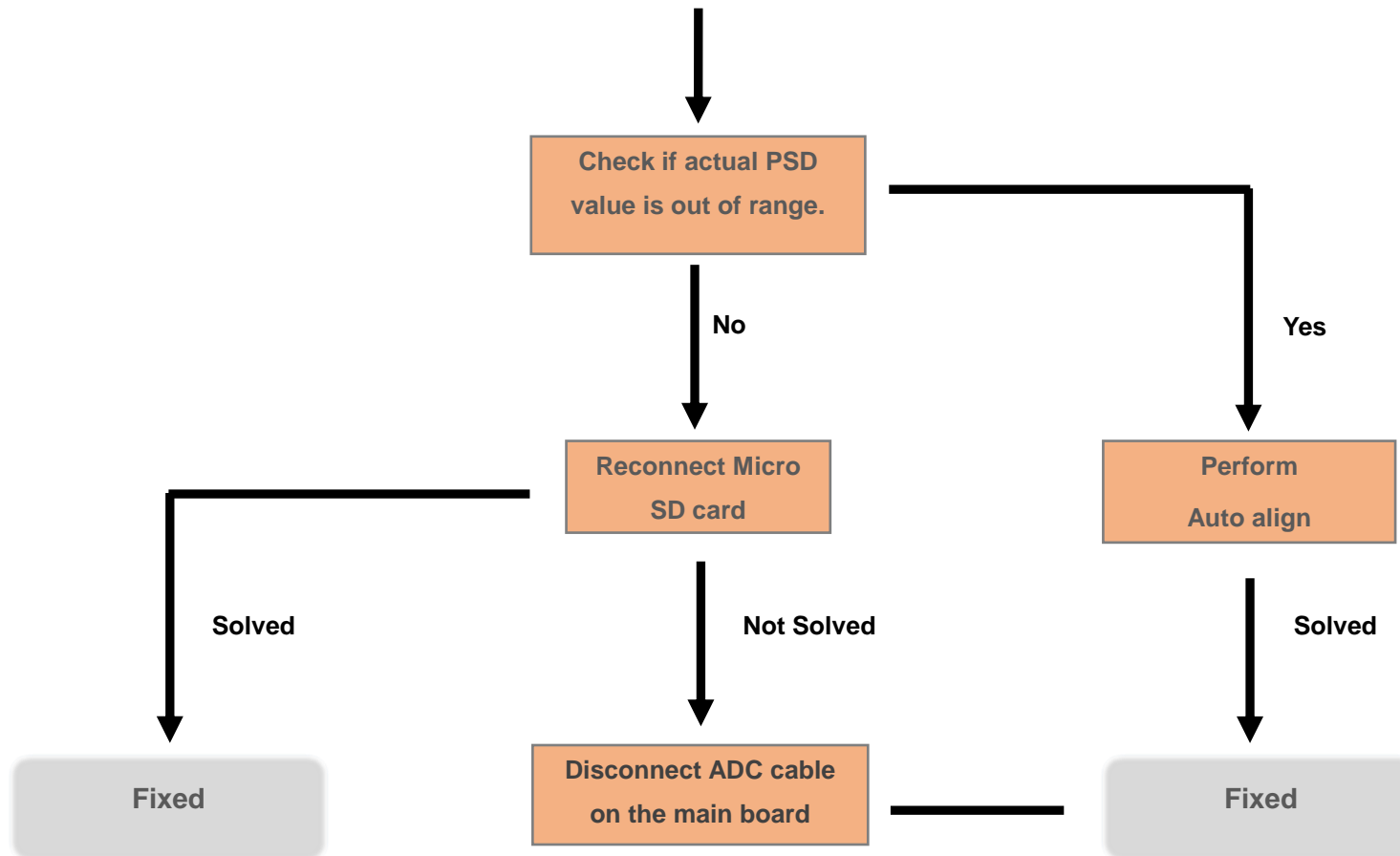
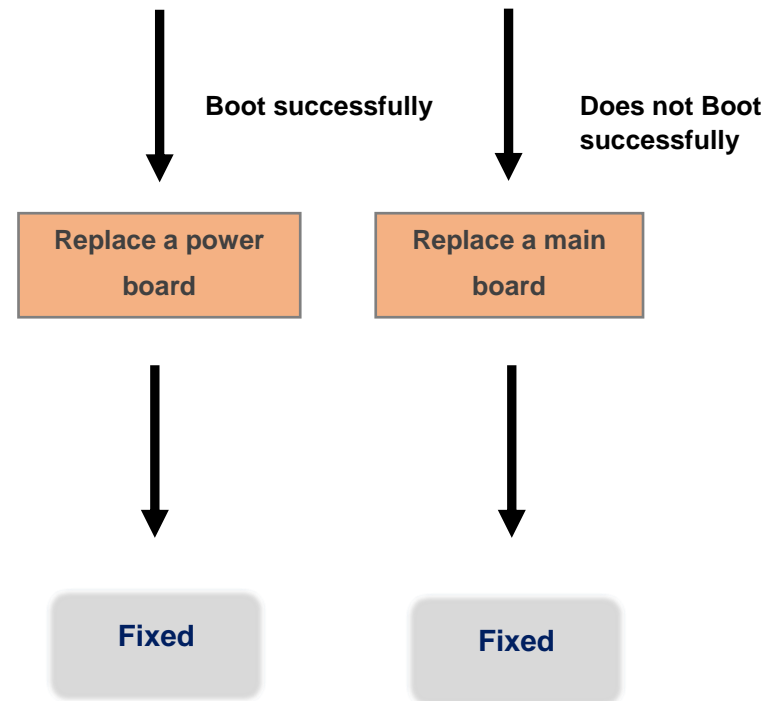


Booting Process Problem

FireCR Flash does not boot. Front led is off, red laser is off and square mirror is spinning when powered on.





Booting Process Trouble Shooting Guide

➤ Actual PSD position

The screenshot shows the Quantor+ software interface with two main tables: 'Readonly parameters' and 'Editable parameters'. The 'LPSD' and 'RPSD' values in the 'Readonly parameters' table are highlighted with red boxes. The 'LSavedPSD' and 'RSavedPSD' values in the 'Editable parameters' table are also highlighted with red boxes.

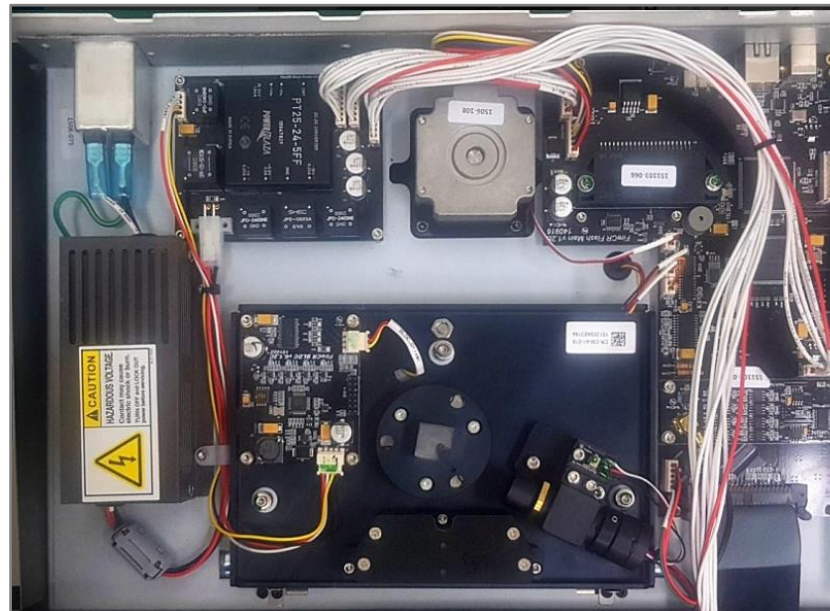
| Readonly parameters | | Editable parameters | |
|---------------------|------------------------|---------------------|---------------|
| Model | FireCR Flash / Flash30 | Resolution | 100 |
| H/W | 1.0.0.1 | PMT Gain | 99 |
| B/L | 1.0.1.90 | ADC Offset | -22 |
| APP | 1.0.1.77 | DHCP | No |
| PN | FR41-00DJAB-100000 | IP address | 192.168.1.36 |
| MAC | 8C:4B:FF:22:EE:34 | Subnet Mask | 255.255.255.0 |
| Mode | USB / ScannerReady | Gate Way | 192.168.1.1 |
| Calibration | Table & Wall | LSavedPSD | -2100 |
| IP | 35x43 | RSavedPSD | 2100 |
| RPM | 1800.51 | | |
| LPSD | -8874 / -0.54166 | | |
| RPSD | -322 / -0.01965 | | |
| LPeak/RPeak | 690398 / 690391 | | |
| Temperature(L/E) | 44.4 / 27.6 | | |
| RFID | 7D69062A500104E0 | | |
| Gain(R) | 99 | | |
| State | Idle | | |

Buttons: Inspection, Reset Scanner, RPM Monitor, Save Params, Auto Align, Stop Align, keyboard mode, length 150, power 6000, L+, R+, L-, R-.

Stage: speed High, length 580000, Forward, Stop, Backward, Ready Pos.

- 1) Run Quantor+ software as administrator rights.
- 2) Open scanner control window.
- 3) Check LPSD and RPSD. If they are all zero, auto align need to be performed.

➤ **Power board confirmation** (FireCR Flash AA, AB and AC only)



ADC cable

- 1) Turn off the scanner power.
- 2) Remove covers to access the main board.
- 3) Unplug an ADC cable on the main board.
- 4) Turn on the scanner power
- 5) If the scanner successfully boots up, the problem is from a power board.
- 6) Exchange a power board referring to the FireCR Flash Service manual.

Booting Process Trouble Shooting Guide

➤ Main board

If bootloader in the MCU is corrupt, it can't download the FPGA data from micro SD card during booting process. In this case, we exchange a main board referring to the FireCR Flash Service manual.

